



WELCOME
TO THE
NDACAN
SUMMER
TRAINING
SERIES!

- The session will begin at 12pm, July 24th, 2019.
- Please turn video off and mute the line.
- This session is being recorded.
- See ZOOM Help Center for connection issues:
<https://support.zoom.us/hc/en-us>
- If issues persist and solutions cannot be found through Zoom contact Andres Arroyo at aa17@cornell.edu.

NDACAN SUMMER TRAINING SERIES

National Data Archive on Child Abuse and Neglect
Bronfenbrenner Center for Translational Research
Cornell University

NDACAN SUMMER TRAINING SERIES SCHEDULE

July 17th, 2019 - Introduction to NDACAN

July 24th, 2019 - Overview of NCANDS Data

July 31st, 2019 - Overview of AFCARS and NYTD Data

August 7th, 2019 - Strategies for Managing Data

August 14th, 2019 - Linking NCANDS, AFCARS, and NYTD Data

August 21st, 2019 - Concluding Session

SESSION AGENDA

Overview of National Child Abuse and Neglect Data System (NCANDS)

- NCANDS Introduction: Madonna Aveni (WRMA), on behalf of Elaine Stedt (CB)
- NCANDS structure and contents of the data files: Kristen Stafford (WRMA)
- NDACAN overview and file structure: Michael Dineen (NDACAN)

NATIONAL CHILD ABUSE AND NEGLECT DATA SYSTEM (NCANDS)

- NCANDS was created as a voluntary system in response to a 1988 Child Abuse Prevention and Treatment Act (CAPTA) amendment.
- NCANDS data are a critical resource for many publications, reports, and activities of the federal government, child welfare personnel, researchers, and others.
- Case-level data are collected for all children who received a response from a child protective services (CPS) agency in the form of an investigation response or an alternative response.
- Aggregate data are mostly collected from agencies outside of CPS.

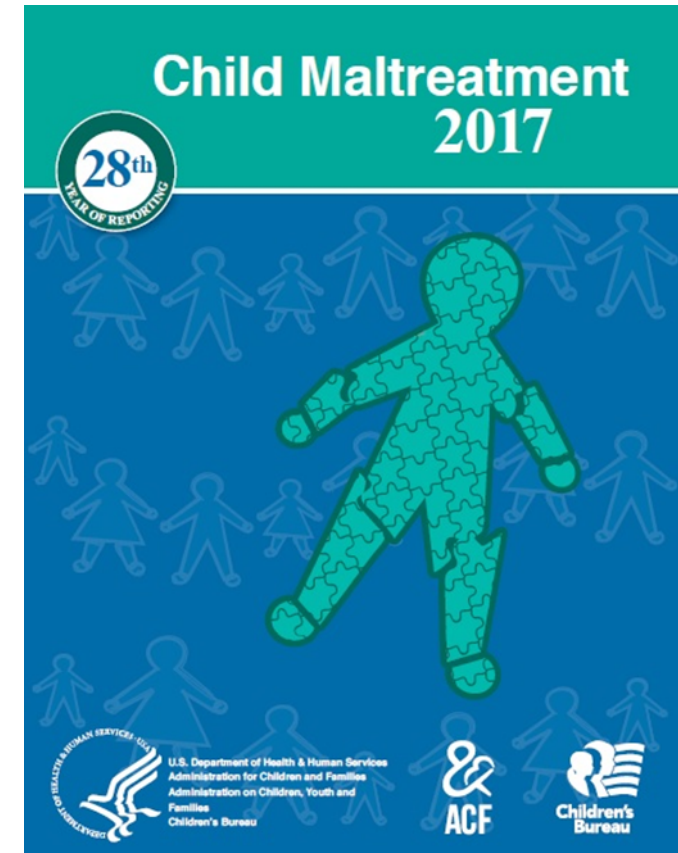
NCANDS DATA COLLECTION, SUBMISSION, AND PUBLICATION CYCLE

- Data due: January 31
- Report period: Federal fiscal year
- Submitted by: 50 states, Commonwealth of Puerto Rico, District of Columbia
- Submissions include:
 - Child File (case level data)
 - Agency File (aggregate data)
 - Encryption certificate
- Data validation: January-March, submissions are validated and reviewed before acceptance

NCANDS DATA COLLECTION, SUBMISSION, AND PUBLICATION CYCLE

NCANDS data are publicly released each year in the Child Maltreatment report:

- Report analyses: Spring
- Draft text and population updates: Summer
- Graphic design and federal clearance: Fall
- Report released: Winter- January or February
- Reports are available on the Children's Bureau website:
<https://www.acf.hhs.gov/cb/research-data-technology/statistics-research/child-maltreatment>



OVERVIEW OF NCANDS

PRESENTERS:

KRISTEN STAFFORD,
SENIOR RESEARCH MANAGER (WRMA)

MICHAEL DINEEN,
STATISTICIAN II (NDACAN)

NCANDS CHILD FILE

- An ASCII (text) file containing:
 - child-specific **records** for each report of alleged child abuse and neglect that received a CPS response.
 - completed **reports** that resulted in a disposition (or finding) during the reporting year.
- **Report-Child Pair = NCANDS Record**
 - Combines the Report ID and Child ID to uniquely identify a single record.
- **Victim**
 - A child with at least one maltreatment level of substantiated or indicated
- **Nonvictim**
 - A child with no maltreatment levels of substantiated or indicated

CHILD FILE: REPORT CHARACTERISTICS

- A Child File contains many reports. Each report:
 - Is a notification of suspected child abuse
 - May involve one or more children (records)
 - May be substantiated, unsubstantiated, alternative response, or other dispositions
 - May involve multiple perpetrators

CHILD FILE: RECORD CHARACTERISTICS

- A single Child File record contains...
 - Data related to only one child in a given report
 - Data representing a victim or nonvictim
 - Data in all fields (for victim records)
 - Data concerning perpetrators (up to three) for victim records

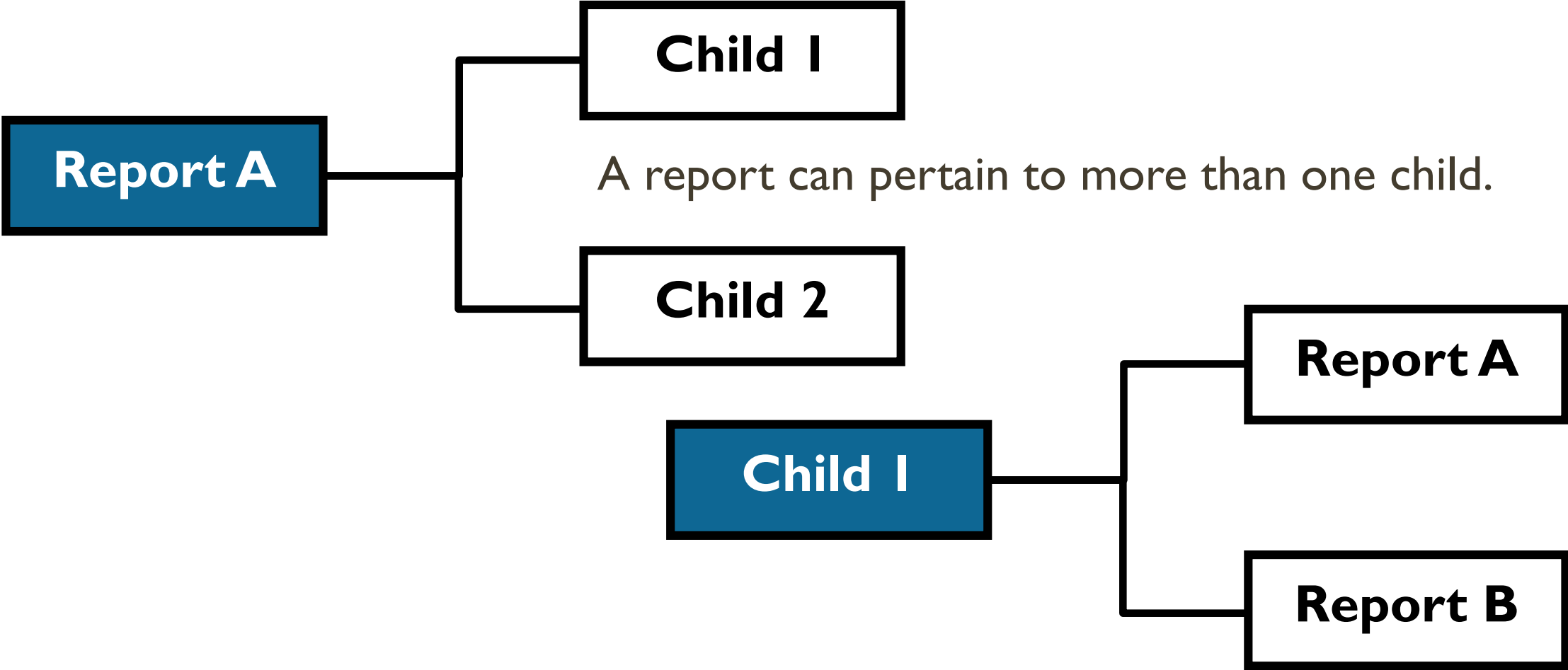
ENTITIES IN THE CHILD FILE

- Report Data (report ID, report date, disposition, investigation start date)
- Child Data (child ID, demographics)
- Maltreatment Data (types, individual dispositions, fatalities)
- Child Risk Factors (substance abuse, diagnosed disabilities)

ENTITIES IN THE CHILD FILE

- Caregiver Risk Factors (substance abuse, financial problems)
- Services (foster care, adoption, counseling)
- Perpetrator Data (relationship to victim, demographics)
- Additional Fields (AFCARS ID, date of death, plan of safe care, referral to CARA-related services)

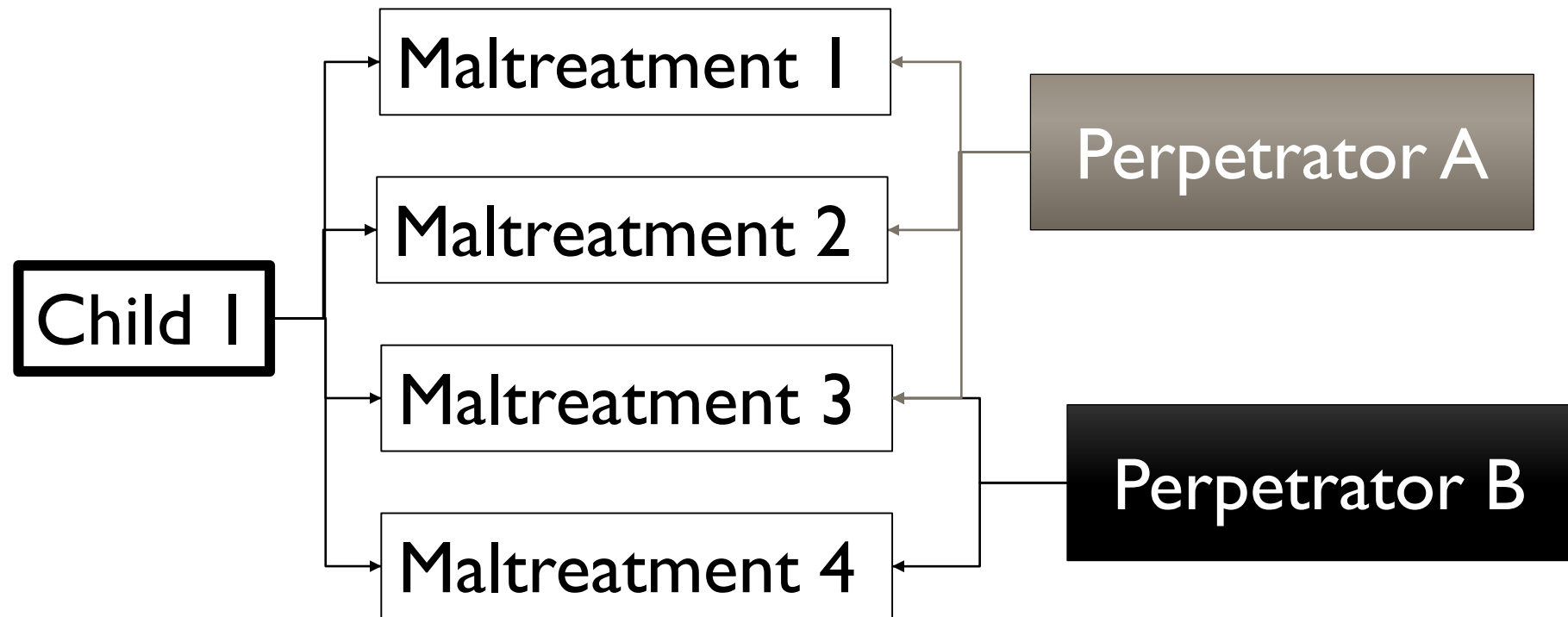
Child File Entity Relationships



A report can pertain to more than one child.

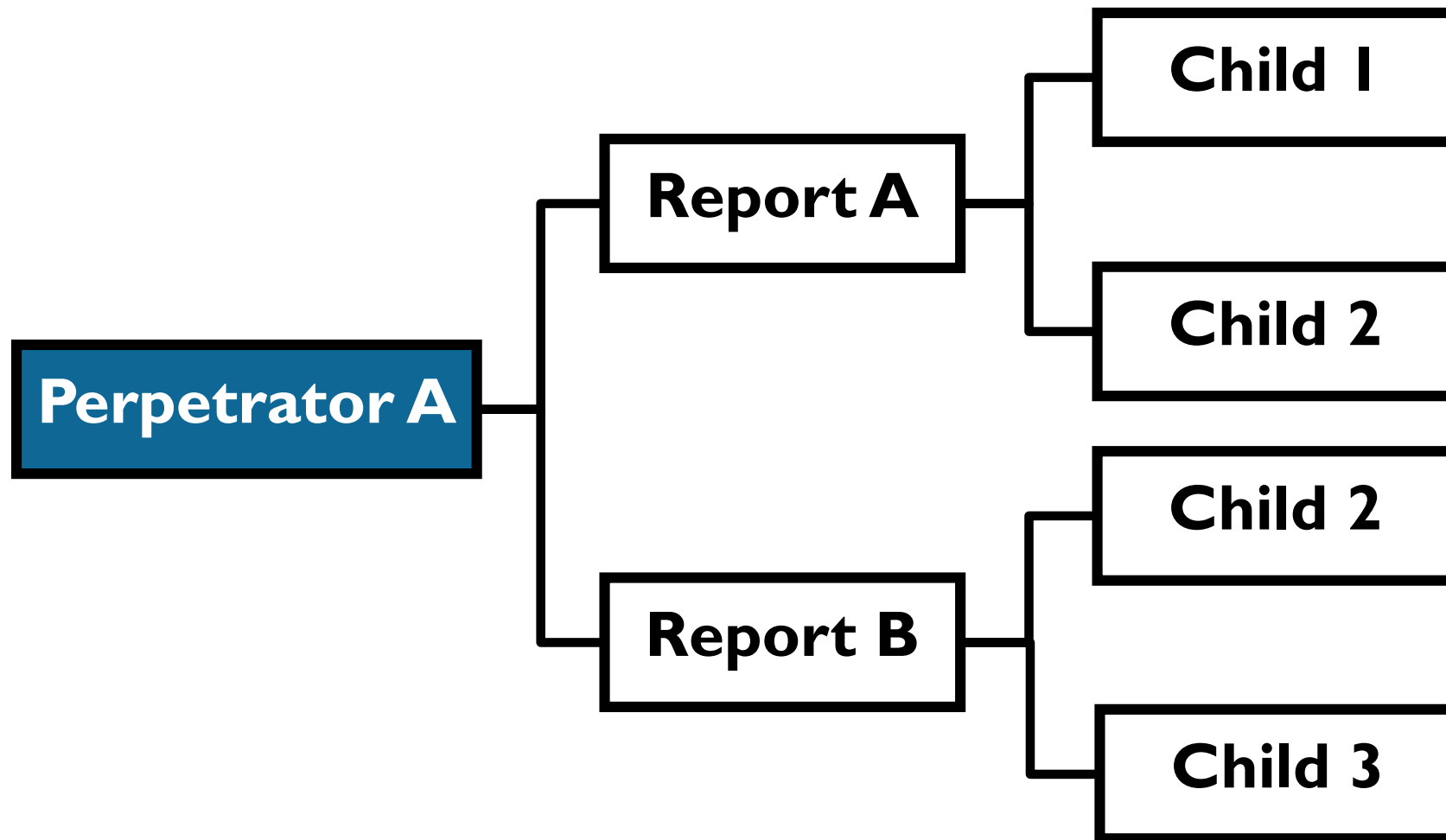
A child can be the subject of more than one report in the reporting period.

Child File Entity Relationships



For a child in a report, each perpetrator can be associated with each maltreatment.

Child File Entity Relationships



A perpetrator can be associated with more than one report and more than one child in a report.

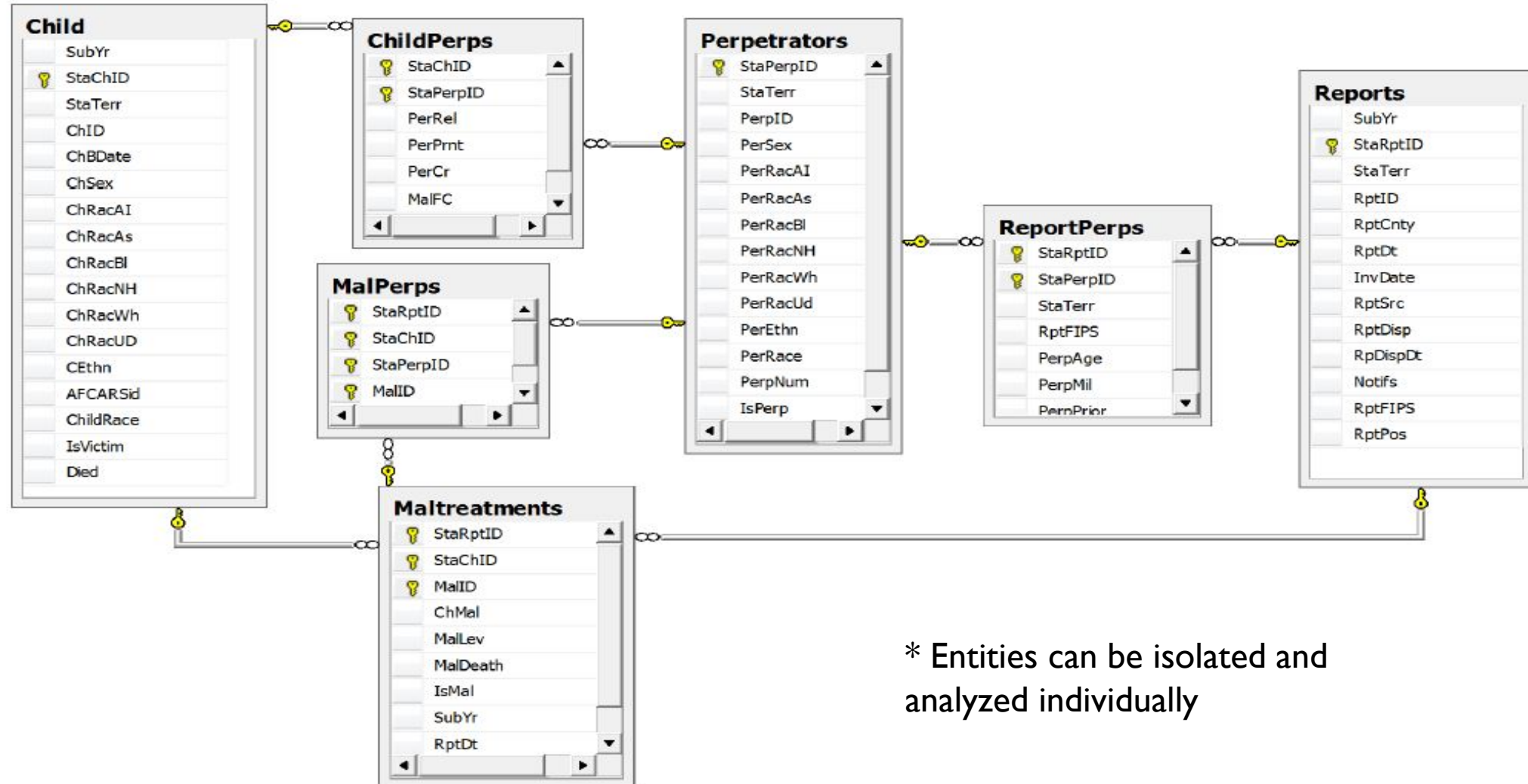
NCANDS AGENCY FILE

- CAPTA required items
- Summary data
 - Prevention Services
 - Referrals and Reports
 - Additional information on Child Victims Reported in the Child File
 - Child Fatalities
 - Part C of IDEA reporting

OVERVIEW OF NDACAN

- Promotes scholarly exchange among researchers in the child maltreatment field.
- Acquires data from leading researchers and national data collection efforts and makes these [datasets](#) available to the research community for secondary analysis.
- Supports information-sharing through its [Child Maltreatment Research List Serve](#) and its [Updata e-newsletter](#) and provides data analysis opportunities to researchers through conference workshops and its annual [Summer Research Institute](#).

ENTITIES IN THE CHILD FILE



* Entities can be isolated and analyzed individually

VARIABLES DERIVED AT NDACAN

- *RptVictim* – indicating that the child is a victim on the current report, is added by NDACAN.
- *StFCID* is the concatenation of the 2-character state code (*St*) and the child's AFCARS ID (*RecNumbr*)

CONFIDENTIALITY PROTECTIONS

- DOB, County of residence, Worker and Supervisor IDs, and Incident Date are not included
- For cases of maltreatment death, State, County, and all IDs are masked
- Codes for counties with fewer than 1000 cases in the file are masked
- Report Date is recoded to the 8th or 23rd
- All other dates are recoded to match the time span since the report date

NDACAN DATA PACKAGE

- Documentation: Code book, User Guide, NCANDS Guidelines, State mapping forms
- Other documents: Child Maltreatment Report
- Data in SPSS, SAS, Stata, and tab-delimited text formats
- Syntax in SPSS, SAS, and Stata for reading the tab-delimited text file

QUESTIONS?

KRISTEN STAFFORD (WRMA),
KSTAFFORD@WRMA.COM

MICHAEL DINEEN (NDACAN),
MED39@CORNELL.EDU

NEXT WEEK...

July 31, 2019

Overview of AFCARS and NYTD Data

Introduction: Angelina Palmiero (CB) and Telisa Burt (CB)

Presenter: Tammy White (CB) and Michael Dineen
(NDACAN)